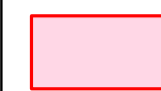


NOTES FOR INFORMATION:

Borough/Parish Boundary - - - - -

Public Right of Way - - - - -

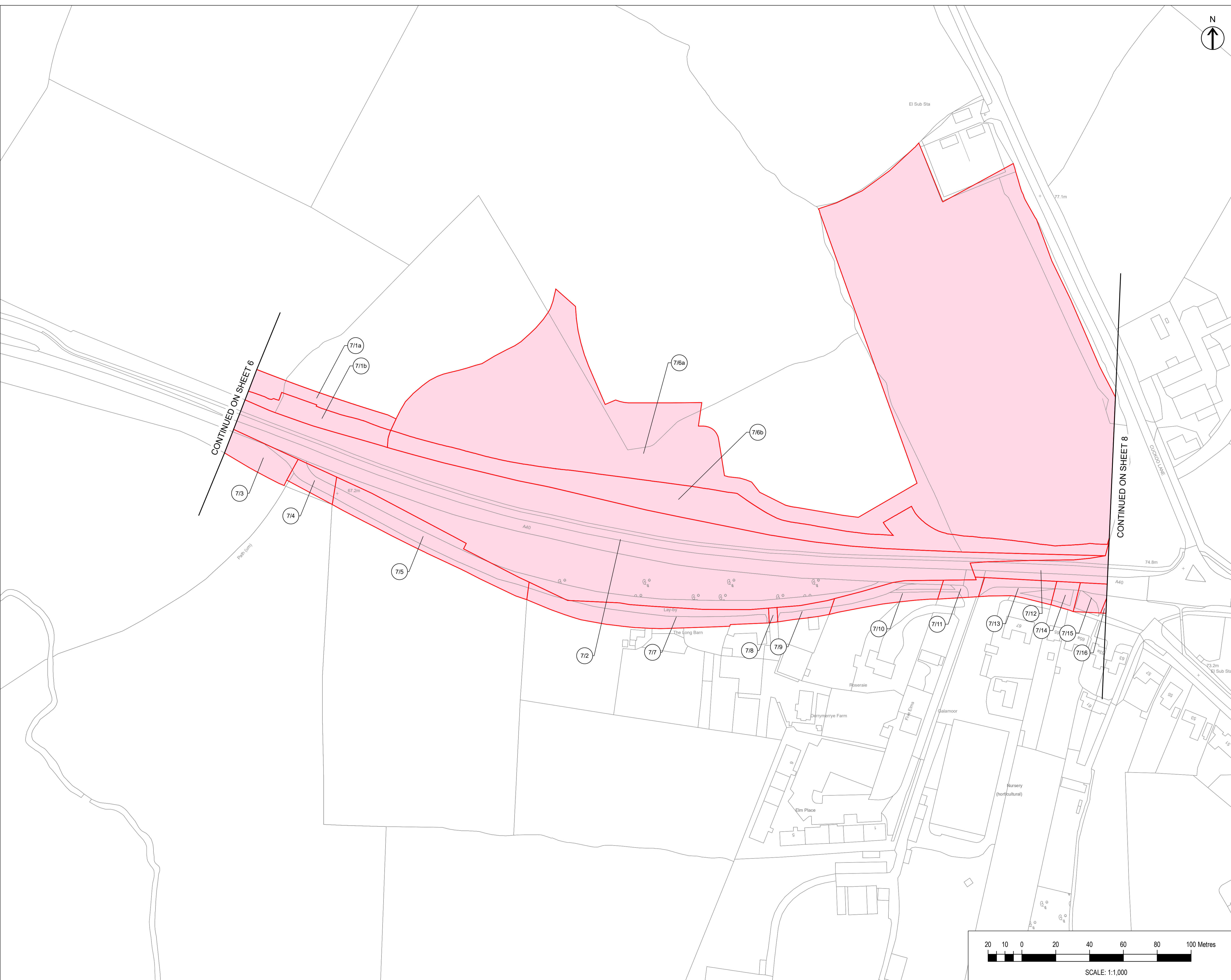
KEY:

 Land (Title) to be acquired

 New Rights (Easement) to be acquired

CONTINUED ON SHEET 6

CONTINUED ON SHEET 8



P02	Plots Updated	11/04/22	CG	SS	JH
P01	First Draft	10/01/22	LH	SS	JH
Rev	Description	Date	By	Check	Approved

This map is reproduced from Ordnance Survey material with the permission of Ordnance Survey on behalf of the Controller of Her Majesty's Stationery Office. © Crown Copyright. Unauthorised reproduction infringes Crown Copyright and may lead to prosecution or civil proceedings. Oxfordshire County Council, 0100023343, 2021



THE OXFORDSHIRE COUNTY COUNCIL
(HIGHWAYS INFRASTRUCTURE – A40
HIF2 SMART CORRIDOR
(HILL FARM TO DUKES CUT))
COMPULSORY PURCHASE ORDER 2022

COMPULSORY PURCHASE ORDER
SHEET 7 OF 19
A40 SMART CORRIDOR – SOUTHERN
MAINTENANCE LAYBY TO PARK AND
RIDE SITE TO OLD WITNEY ROAD

The COMMON SEAL of
Oxfordshire County Council
was herunto affixed in the
presence of –



Authorised Officer
Dated this day of 2022 Seal No.

Drawn	Checked	Approved	Date
CG	SS	JH	11/04/22

GH Project Number 132861.005 Scale at A1 1:1,000

Drawing Number GH-132861005-CPO-7 Revision P02

